



## HIGH DESIGN CARVING COLLECTION

We explore the emerging aesthetic potential of contemporary wood design through the redesign of solid wood surfaces.



# PUREVENEER

---

REFINED ELEGANCE

W O O D E N   W O R K

## Solid wood engraving texture board product introduction

- The texture style can be specially customized according to the needs of the project, and the 3D model and CNC programming can be completed according to the requirements of the designer.
- Texture design is inspired by nature, traditional handicraft patterns, works of art and mathematics. It is inspired by modern numerical control technology and traditional wooden handicrafts. Most of the textures are original designs and independently developed.
- Materials are not limited to solid wood materials, such as marble, metal, gypsum and density board, etc.

MODEL :SW -01

Texture

Convex height : 0.3 or 0.5mm



Front view



Partial view

MODEL :SW -02

Texture

Width 3mm

Convex size : 2\*2 - 5\*5mm

Deep 1.0mm



Front view



Partial view



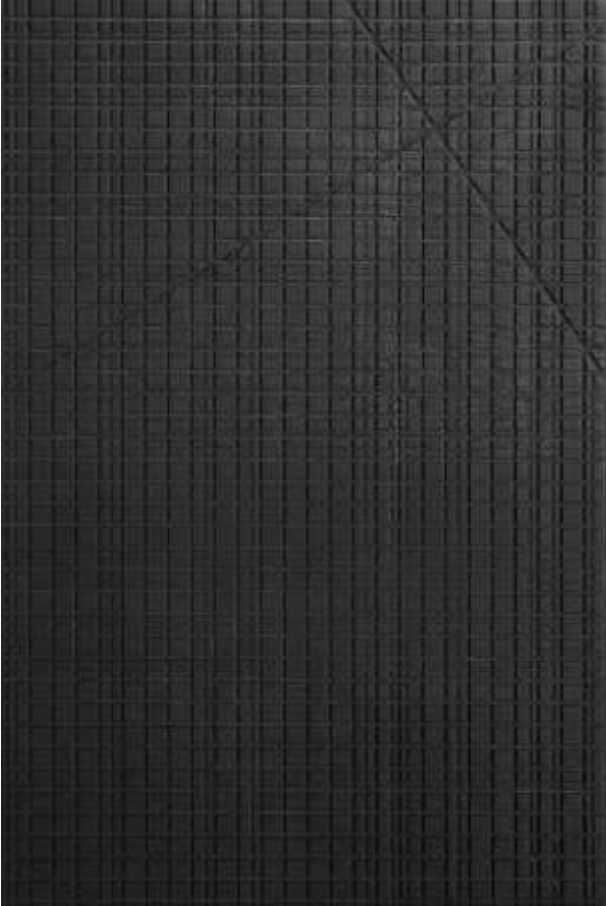
MODEL :SW -03

Texture

Width :3mm

Convex size : 4\*4 - 14\*14mn

Deep : 1.2mm



Front view



Partial view

## MODEL :SW -04

Texture

Width : 4mm

Convex size : 2-20mn

Deep : 0.5mm



Front view



Partial view



MODEL : SW -05

Texture

Width : 4mm

Deep : 0.3 -0.5mm



Front view



Partial view

MODEL : SW -06

Texture

Width : 4mm

Convex height : 0.5mm



Front view



Partial view



MODEL : SW -07

Texture

Width : 1 -4mm

Deep : 1.5mm



Front view



Partial view

MODEL : SW -08

Texture

Width : 0.5 -2.0 mm

Deep : 0.3 -2.5 mm



Front view



Partial view



MODEL : SW -09

Texture

Width :2.0 -5.0 mm

Deep : 0.3 -2.5 mm



Front view



Partial view



MODEL : SW - 10

Texture

Convex height : 0.3 - 2.5 mm



Front view



Partial view

MODEL : SW - 11

Texture

Width : 4 mm

Deep : 1.5 mm



Front view



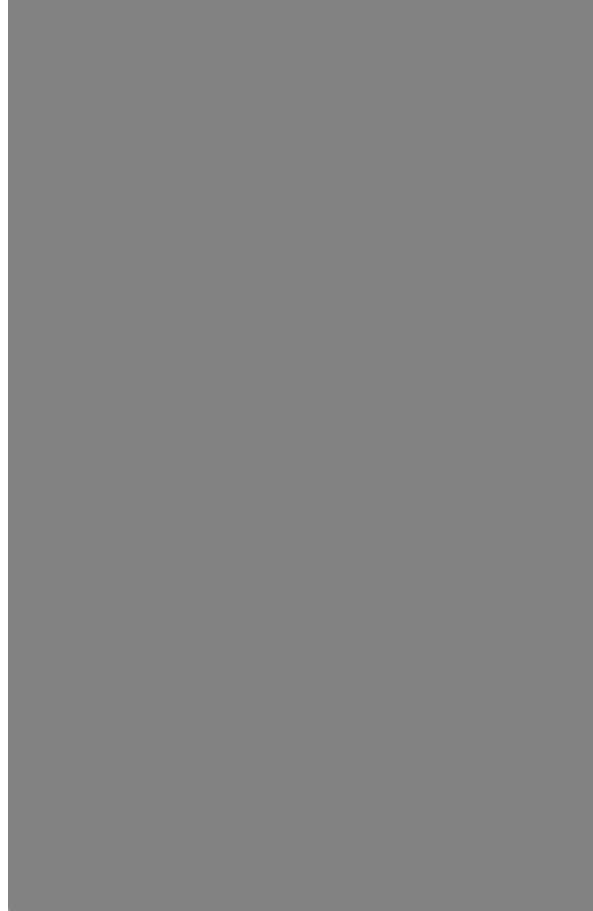
Partial view

MODEL :SW -12

Texture

Width :1.5 mm

Deep : 2.5 mm



Front view



Partial view



MODEL : SW - 13

Texture

Width : 1.5 mm

Deep : 2.5 mm



Front view



Partial view

MODEL : SW - 14

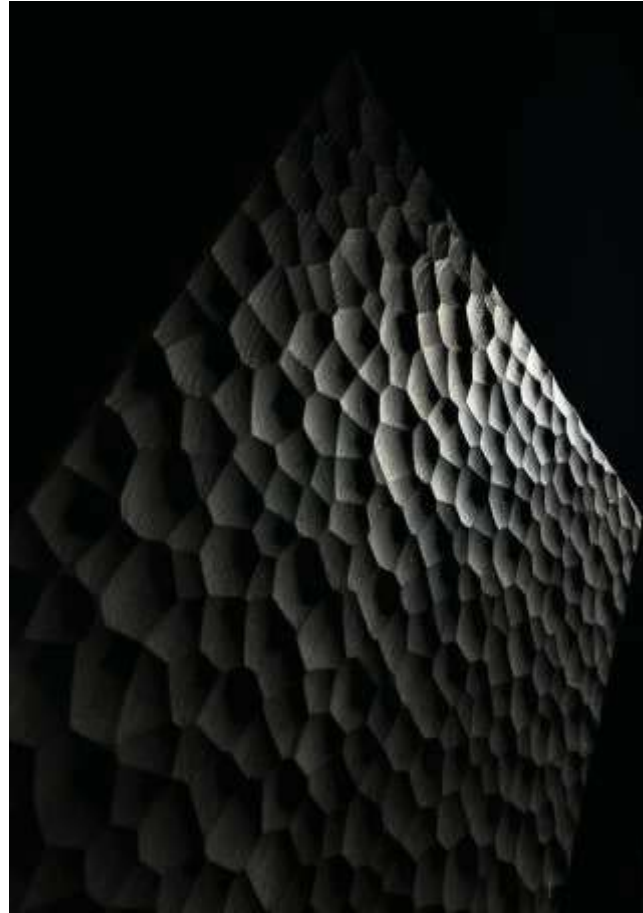
Texture

Width : 25 - 60 mm

Deep : 2.0 - 3.5 mm



Front view



Front view



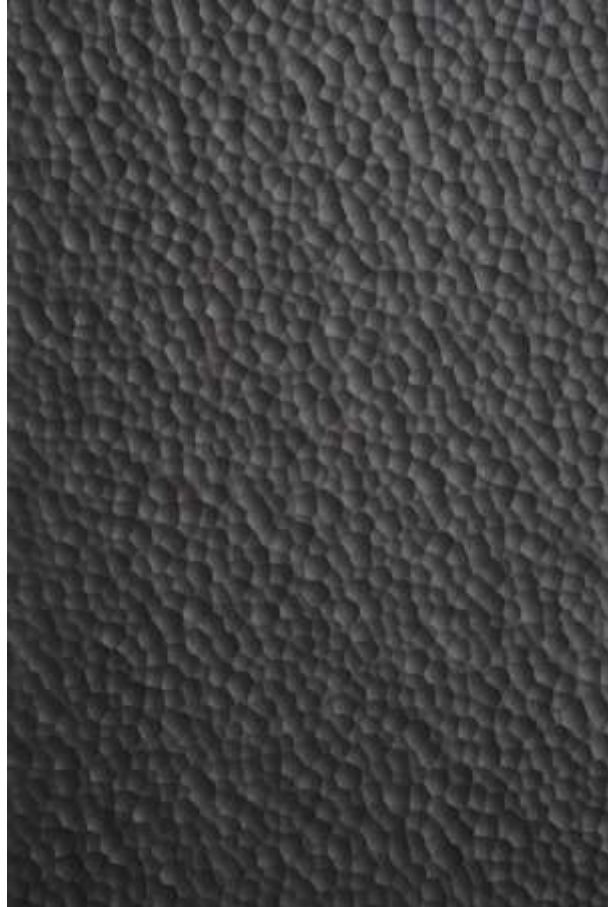
Partial view

MODEL : SW - 15

Texture

Width : 10 - 35 mm

Deep : 1-3 mm



Front view



Partial view

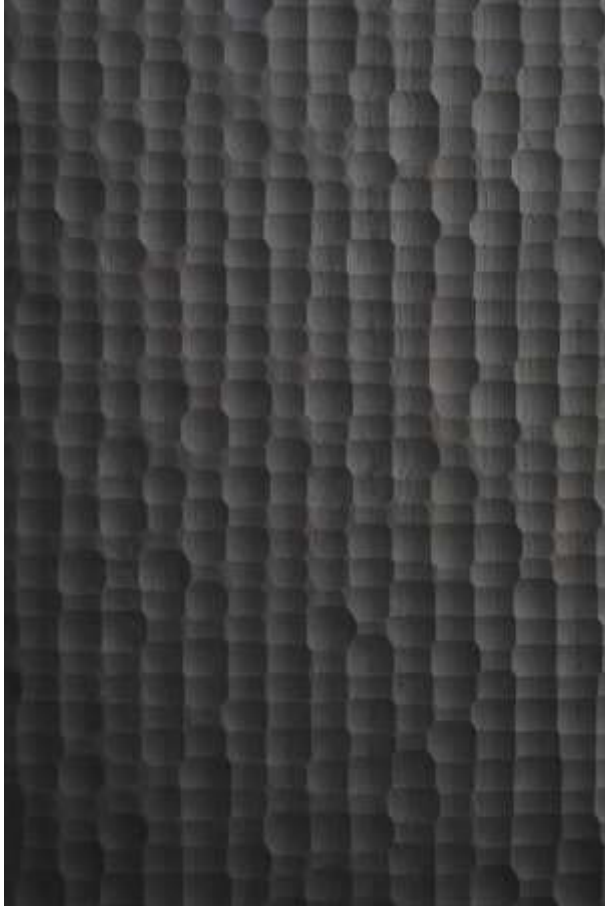


MODEL : SW - 16

Texture

Width : 40 - 50 mm

Deep : 2.0 - 3.5 mm



Front view



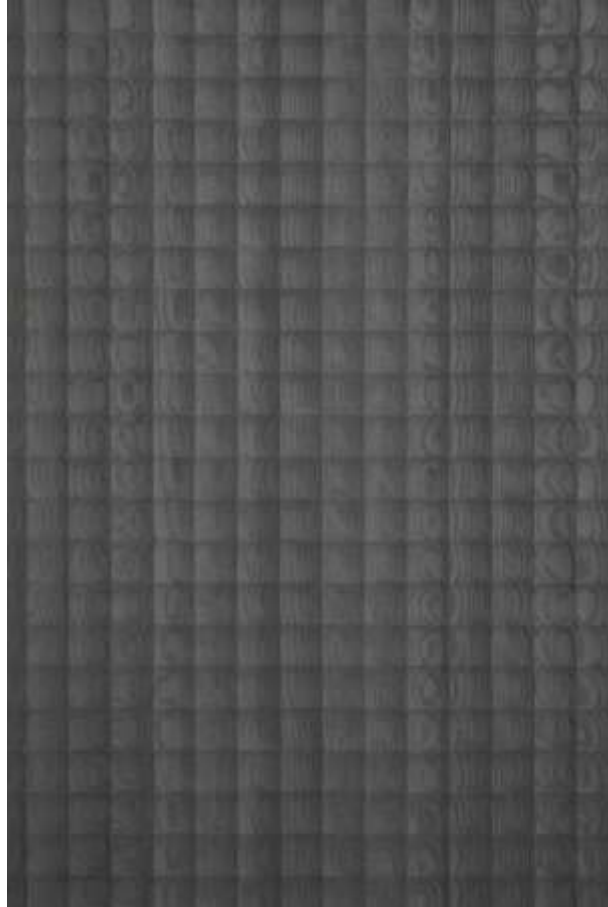
Partial view

MODEL : SW -17

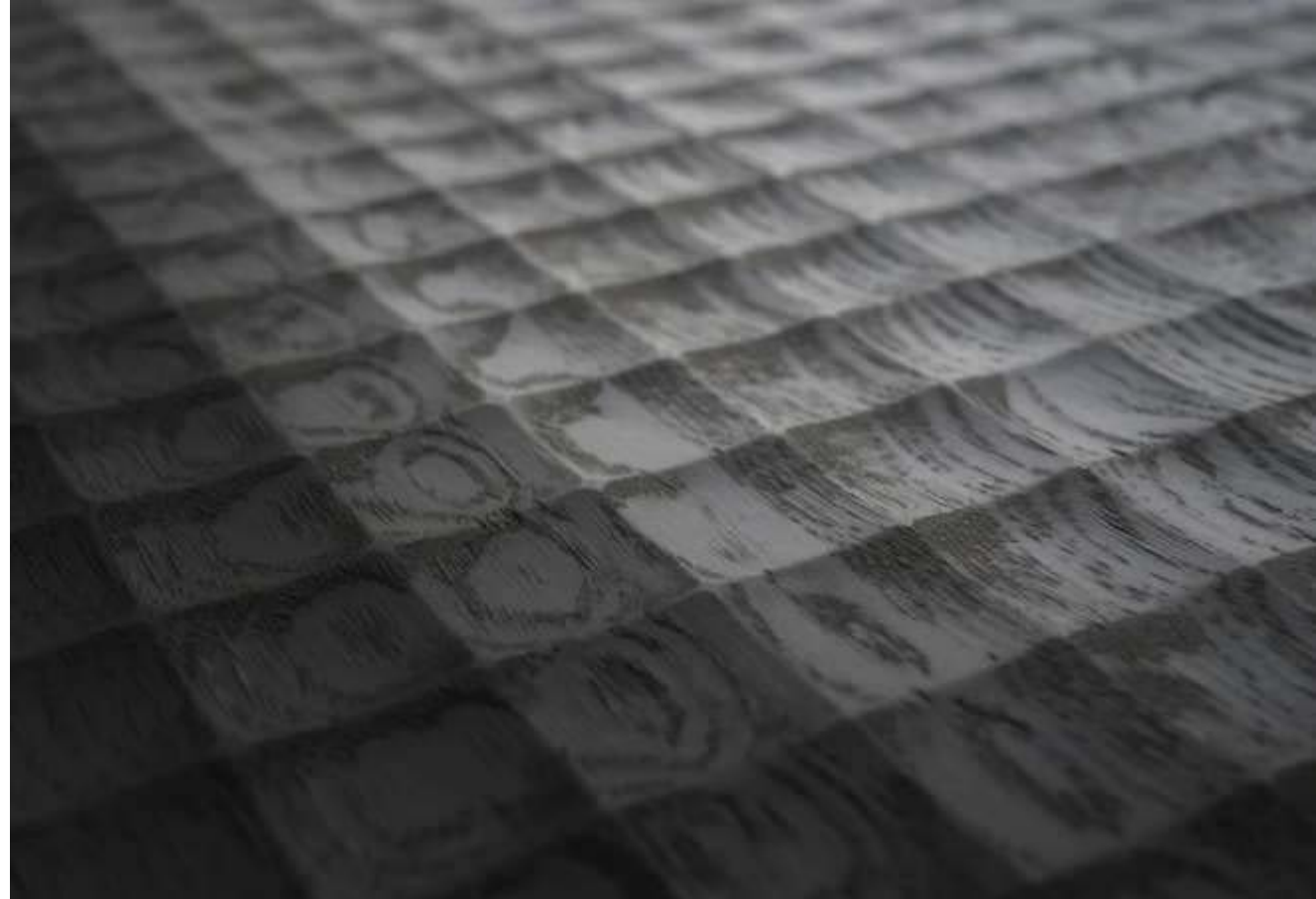
Texture

Convex size : 40\*40 mm

Deep : 3.5 mm



Front view



Partial view

MODEL : SW - 18

Texture

Length : 30 - 80mm

Width : 10 - 30 mm

Deep : 1.5 - 3mm



Front view



Partial view



MODEL : SW - 19

Texture

Length : 200 - 400mm

Width : 0 - 25 mm

Deep : 1.5 - 3.5 mm



Front view



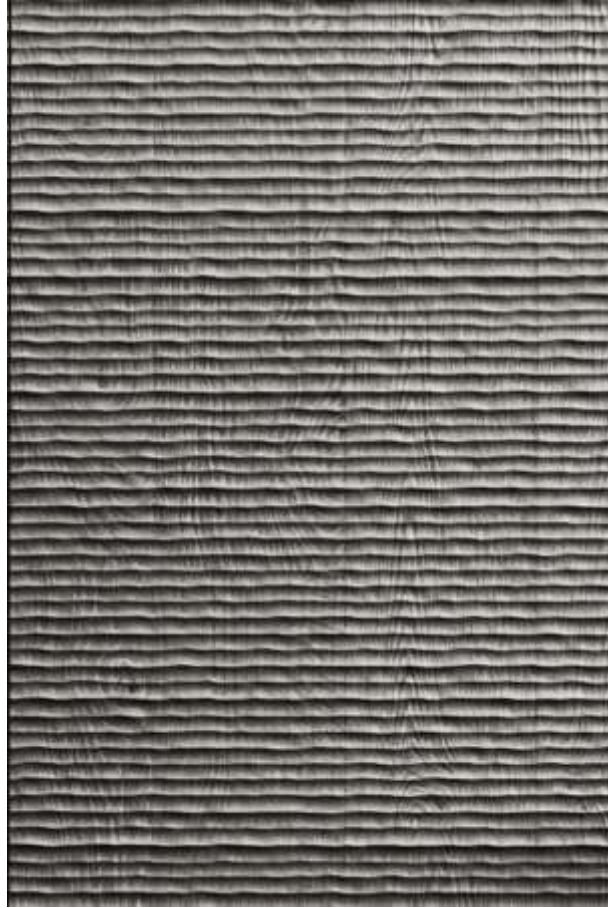
Partial view

MODEL : SW -20

Texture

Width :10 mm

Deep : 3.5 mm



Front view



Partial view

MODEL : SW -21

Texture

Width :15 -30 mm

Deep : 3mm



Front view



Partial view



MODEL : SW -22

Texture

Width : 0 -5 mm

Deep : 2.5 mm



Front view



Partial view

MODEL : SW -23

Texture

Width : 3 mm

Deep : 0.5 - 2.0 mm



Front view



Partial view



MODEL : SW -24

Texture

Width : 3 mm

Deep : 0.5 - 2.0 mm



Front view



Partial view



MODEL : SW -25

Texture

Width : 3 mm

Deep : 0.5 - 2.0 mm



Front view



Partial view

MODEL : SW -26

Texture

Width : 3 mm

Deep : 1.5 mm



Front view



Partial view

MODEL : SW -27

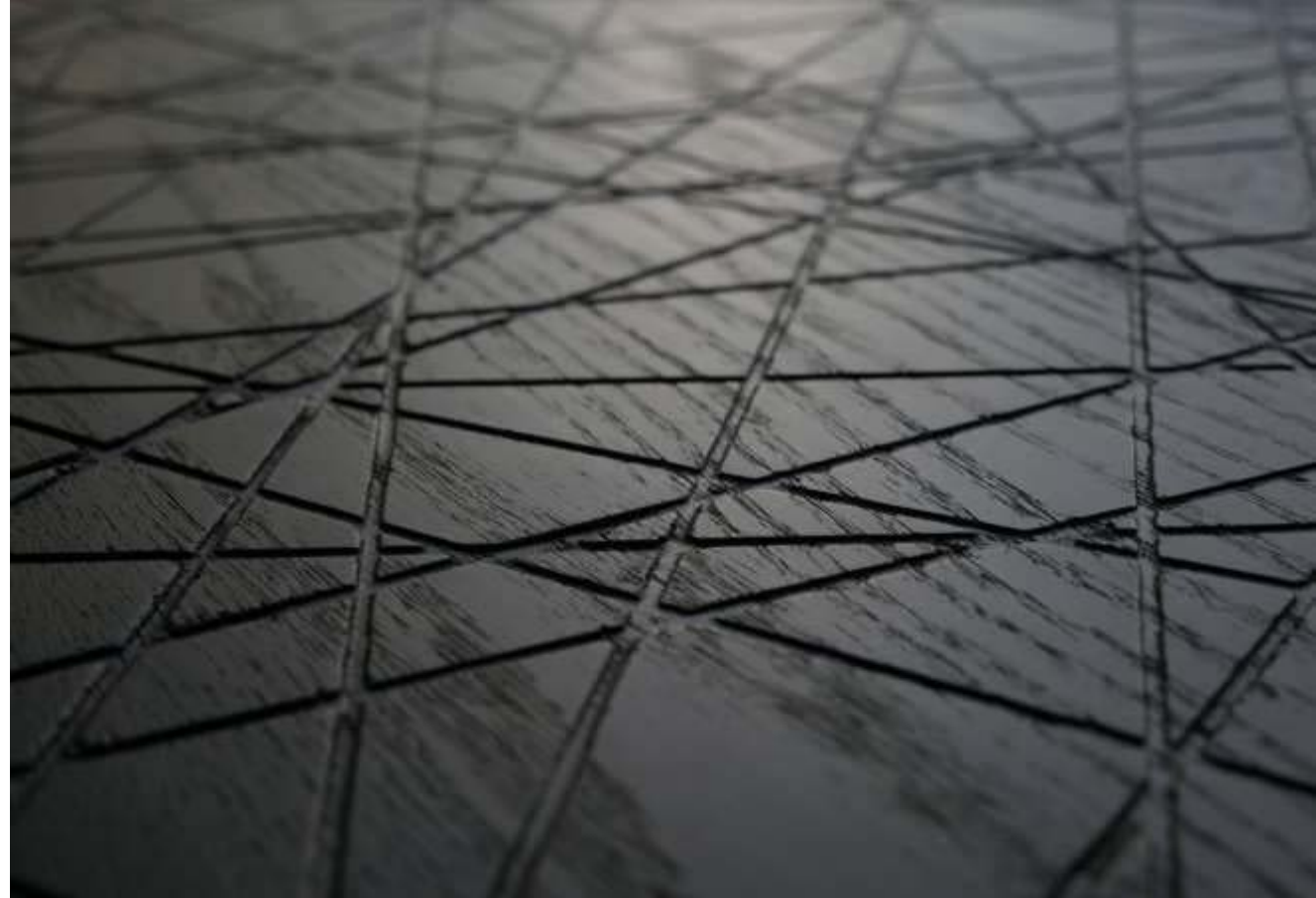
Texture

Width : 3 mm

Deep : 2.5 mm



Front view



Partial view



MODEL : SW -28

Texture

Width : 5 - 15 mm

Deep : 1.0 mm



Front view



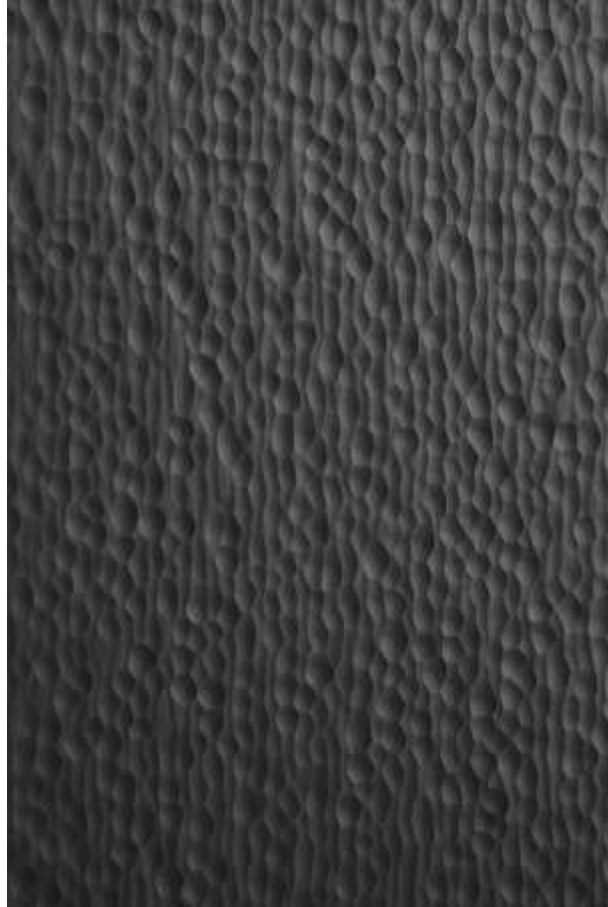
Partial view

MODEL : SW -29

Texture

Width : 10 - 30 mm

Deep : 1-3 mm



Front view



Partial view

MODEL : SW -30

Texture

Width : 8/30 mm

Deep : 3.5 mm



Front view



Partial view



MODEL : SW -31

Texture

Length : 600mm

Width : 30 - 50 mm

Deep : 3.5 mm



Front view



Partial view

MODEL : SW -32

Texture

Width :15 mm

Deep : 3mm



Front view



Partial view

MODEL : SW -33

Texture

Convex height : 1.0mm



Front view



Front view



Partial view



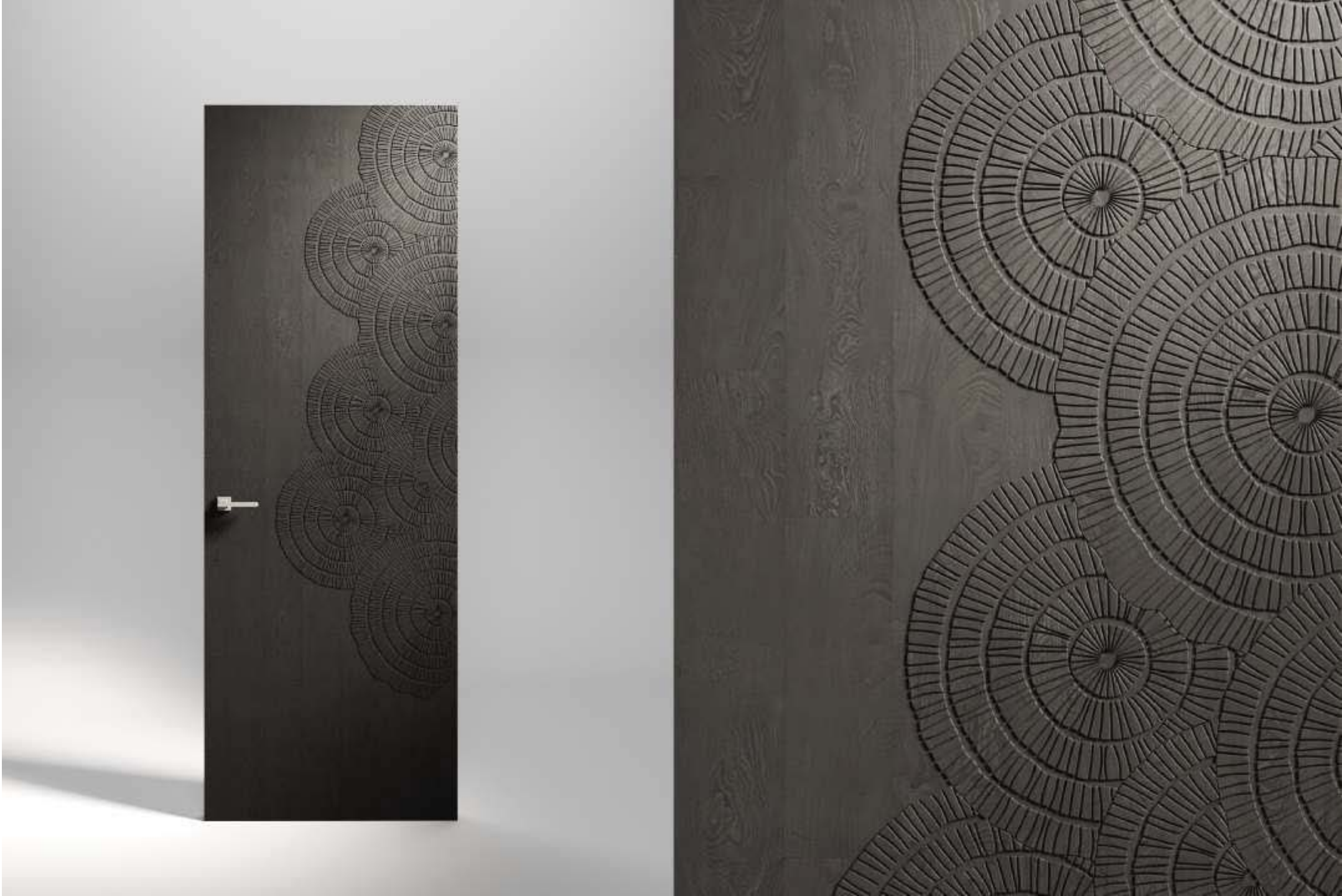
# Solid wood door

Surface : Double -sided 5mm oak panel

Core : Oak Wood frame, Wood Structural mechanics  
plate,combination thickness 45mm ;

Door pocket: solid wood door pocket board, solid  
wood door pocket line







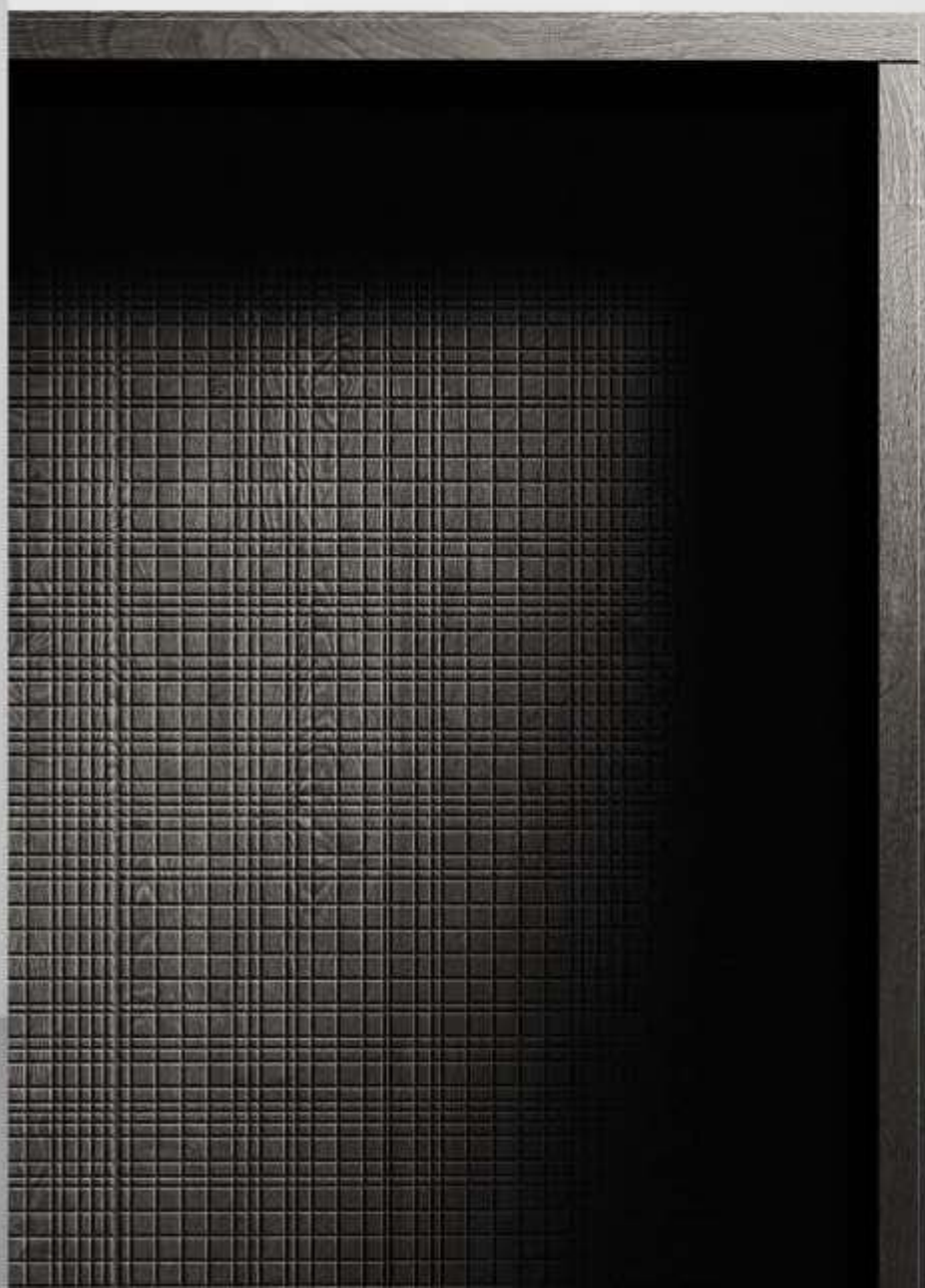










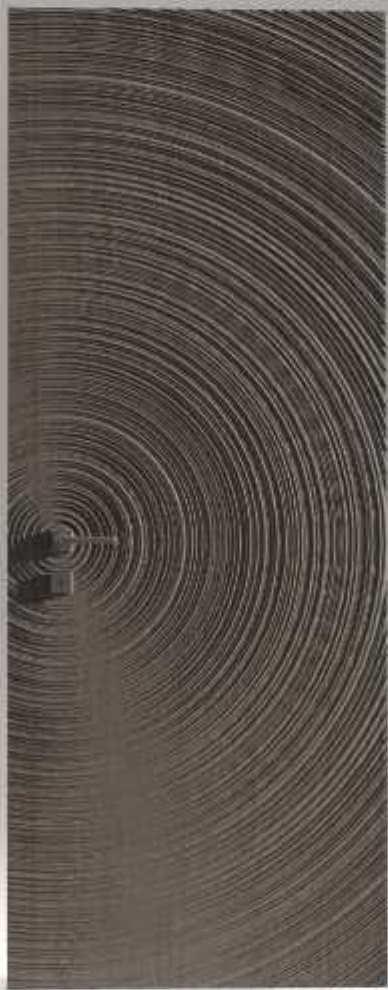


























# Wall Panel

Surface : 3-5mm panel ;

12mm birch multi -layer board /LSB board ;

Installation system : Aluminum profile wall hanging system







































EDD CHANEL  
CHANEL  
CHANEL













# whole cabinet door

Double -sided 5mm oak panel ,

Core : Oak Wood frame, Wood Structural mechanics plate,  
combination thickness 22MM





































# Get in Touch

To get in touch with us please use the contact form below. You can also contact us through the contact information below. We would be happy to hear from you.

For projects and more follow us on:



PureVeneer\_AU



[Linkedin.com/company/pureveneer/](https://www.linkedin.com/company/pureveneer/)



PureVeneer\_AU

[www.PureVeneer.com.au](http://www.PureVeneer.com.au)